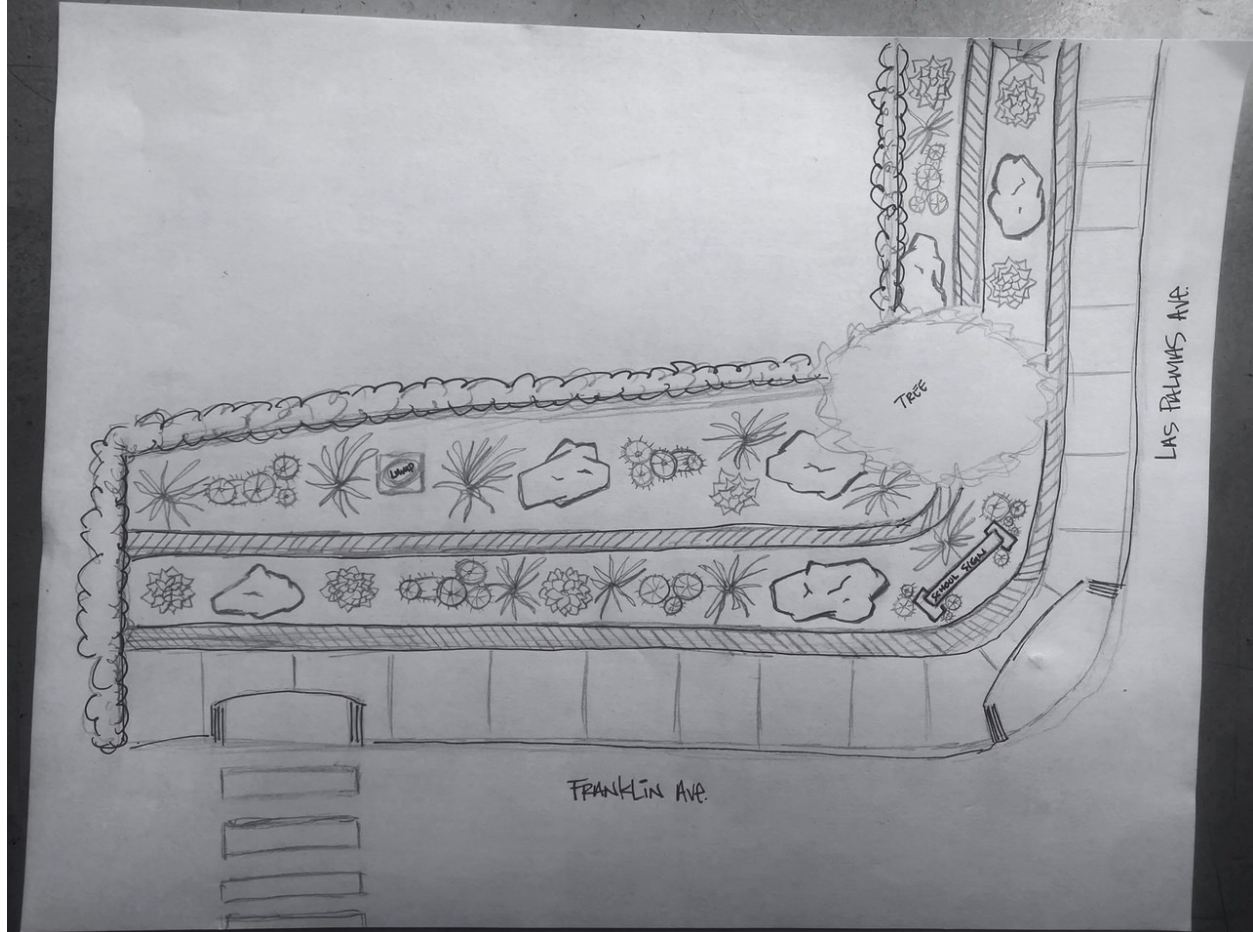


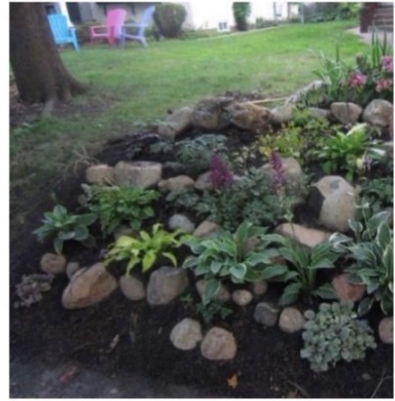
>>

>> Option A: Pending any specific approvals; Create space into a small dog park with a simple gate and ground fit for dogs. Maybe a few nice plants for aesthetics. Disposable bag holders and a few dog park necessities. Gate option attached



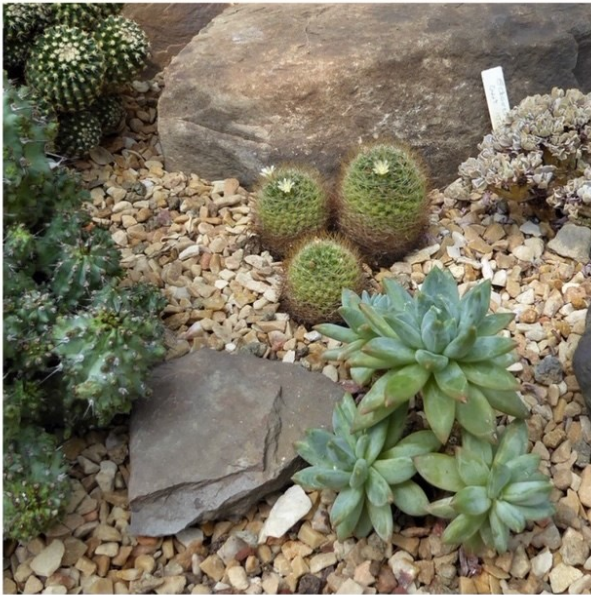
Option B. Full Landscaping of the space using succulents, rocks, wood chips and plants to fill the space.
Photos of a variety of options to fill the space











>>

>>

>>

>> This option in particular at the back of the space may work well to fill in the depth and then plants and rocks in front of that? Sketch attached



d