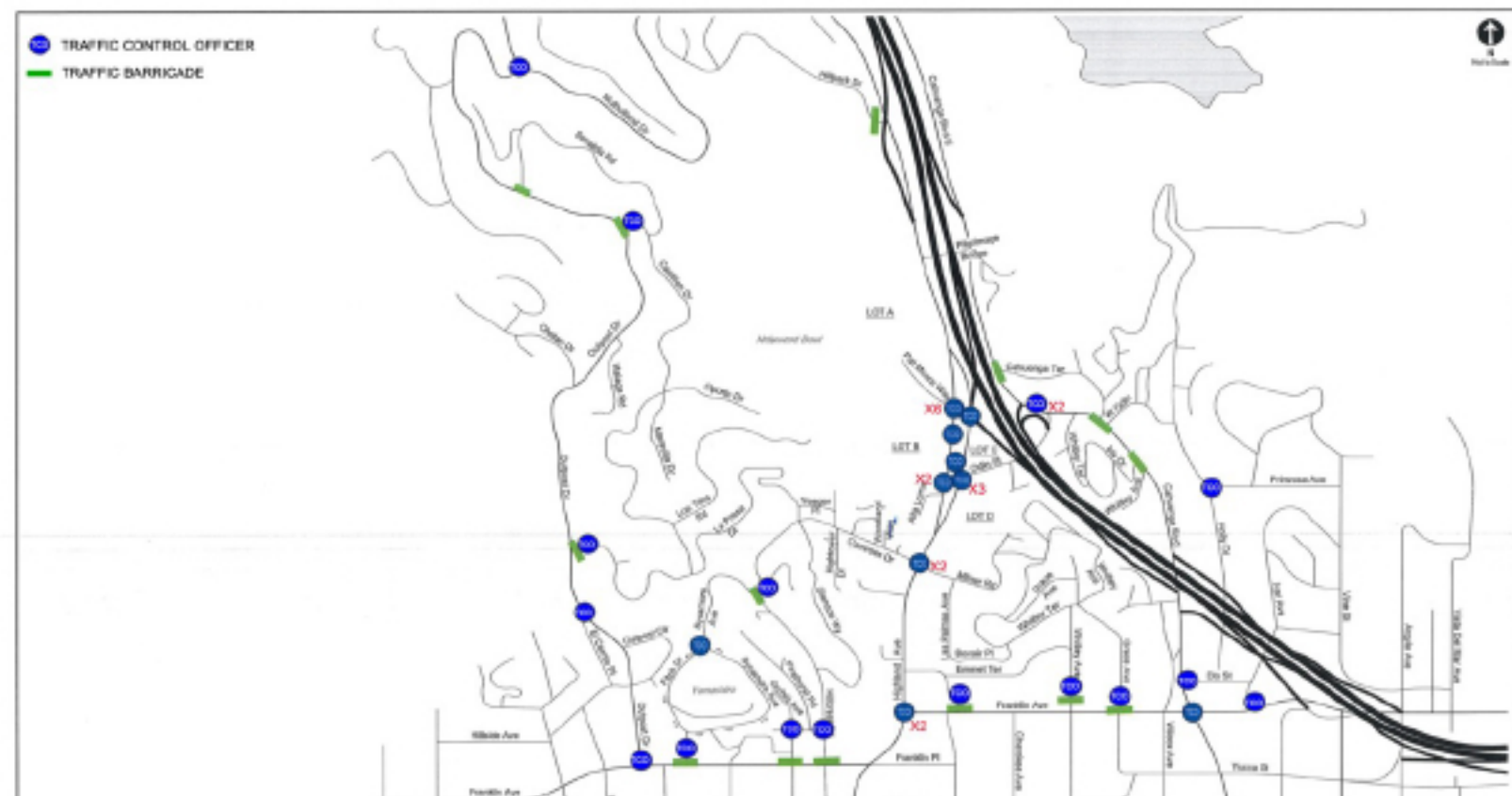
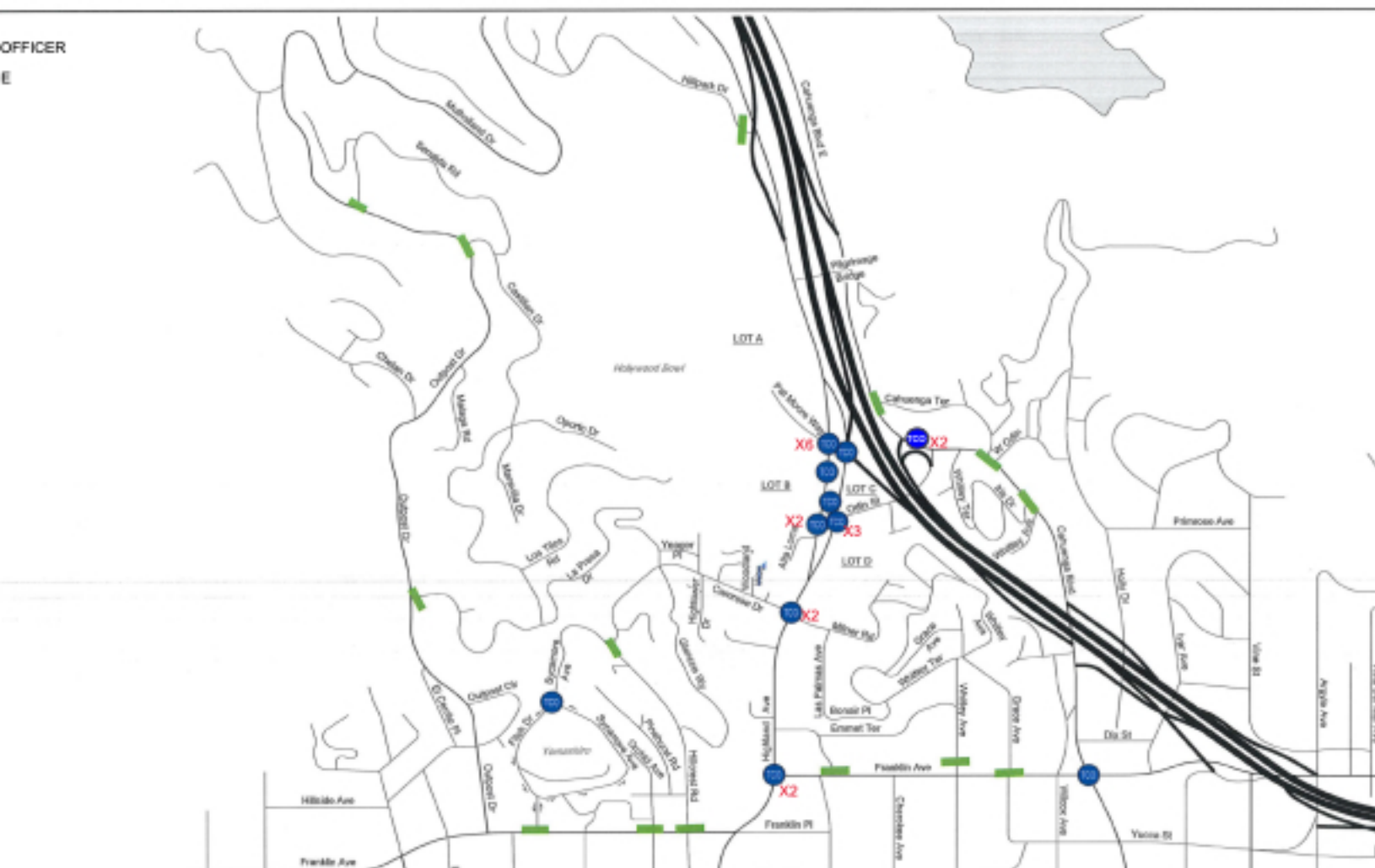


HOLLYWOOD BOWL - FULL STREET CLOSURE



HOLLYWOOD BOWL - NO STREET CLOSURE



What is your preference for periodic closures at Milner & Camrose during peak Hollywood Bowl Traffic Nights?

Option	PROS	CONS
A) No Change- Maintain Periodic Full Street Closures	<ul style="list-style-type: none"> Quieter streets on busiest Bowl Traffic nights Navigation services divert traffic. No traffic (including rideshare) is allowed through Milner & Camrose Residents are familiar with impact during 2022 season. LAPD motor officers stationed for enforcement Additional TCOs deployed for enforcement and traffic flow 	<ul style="list-style-type: none"> May take some residents longer to exit/ enter neighborhood through designated points.
B) Remove All Closures – No Street Closure	<ul style="list-style-type: none"> Some residents will have faster path to exit/enter neighborhood 	<ul style="list-style-type: none"> Increased traffic, noise, parking across Bowl nights Navigation services no longer divert traffic Increased cut-through traffic - Possibility that Emergency services are impeded LAPD motor officers not deployed Less TCOs added for traffic flow/reduced ability to monitor and keep traffic moving
C) Reduce Frequency of Closures	<ul style="list-style-type: none"> Some quieter streets on 'busier' nights Increase of some residents having faster path to exit/enter 	<ul style="list-style-type: none"> Increased traffic, noise & parking across some head Bowl nights Trialing reducing frequency may not have intended impact Increased cut-through traffic on some nights Possibility that Emergency services impeded on some nights LAPD motor officers not deployed on some nights Less TCOs added for 2 traffic flow/reduced ability to monitor and keep traffic moving on some nights